

EasyWave Install Guide

1 Prior to Installation

1.1 Hardware requirement

- 1GHz or higher processor
- 200M or more hard disk space
- 1024x768 monitor resolution or above
- 256M or more RAM
- USB interface and cable
- LAN interface and cable

1.2 System Support

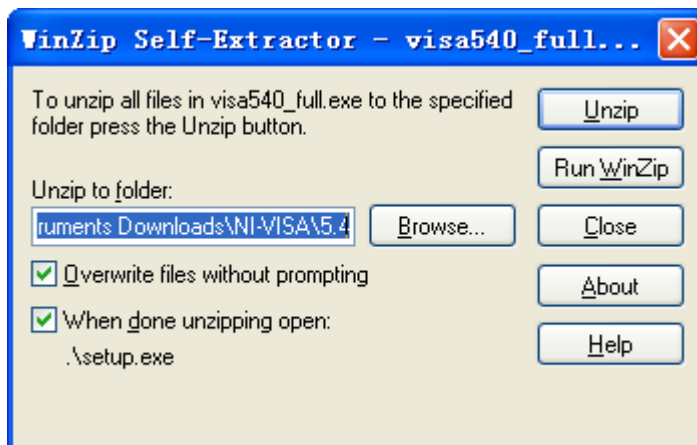
- Microsoft Windows 2000, XP system
- Win7 32bit and 64bit system
- Vista 32bit and 64bit system
- Windows 8 32bit and 64bit system.
- Windows10 32bit and 64bit system.

1.3 Software requirement

NI-VISA:

Before installing the EasyWave application, you have to install NI-VISA 5.4(This manual takes the NI-VISA5.4 as the example and you can install the latest version), which you can download from the [NI-VISA](http://www.ni.com/download/ni-visa-5.4/4230/en/) web site at: <http://www.ni.com/download/ni-visa-5.4/4230/en/>. After you download the file you can follow the steps below to install it:

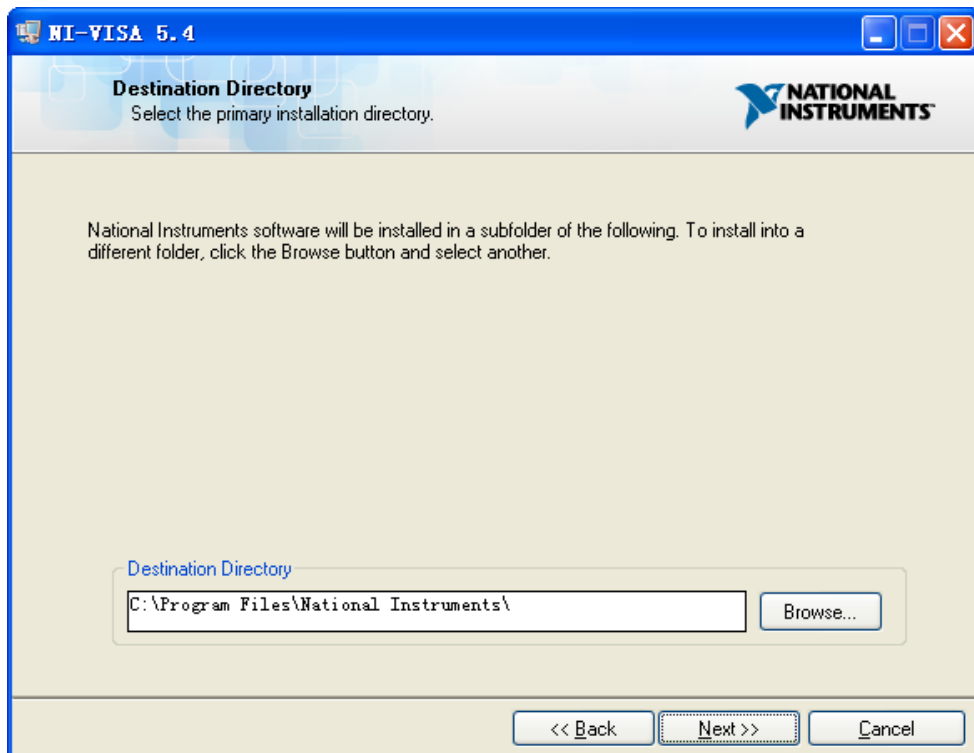
- a. Double click the visa540_full.exe, dialog shown as below:



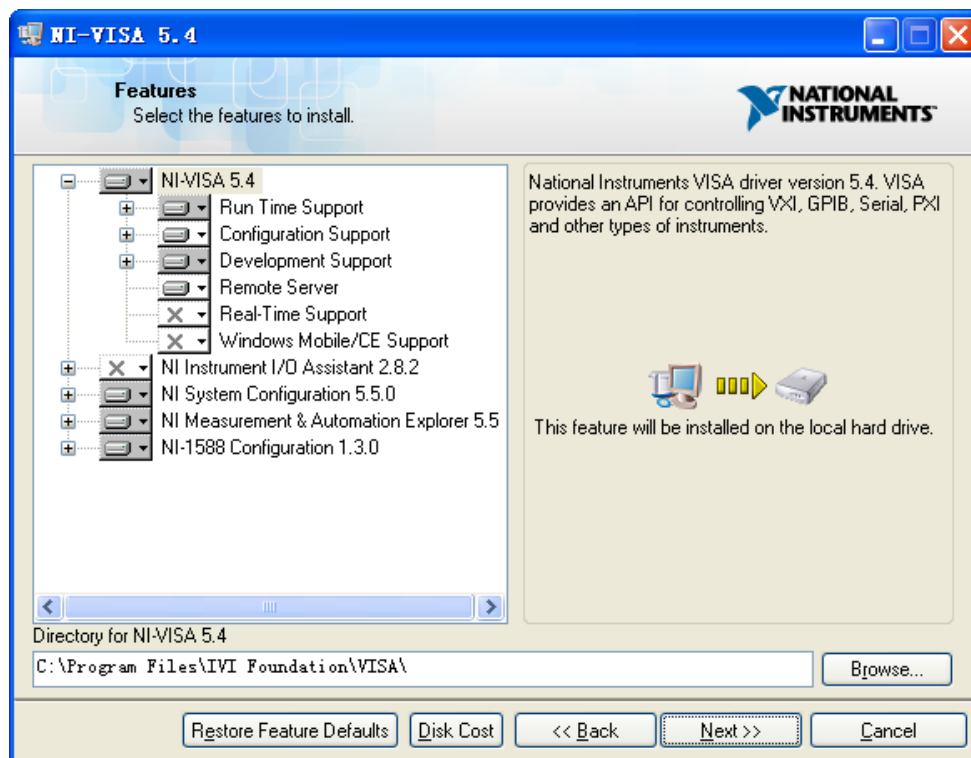
- b. Click Unzip, the install process will launch after unzipping files. If your computer needs to install .NET Framework 4, its Setup process will auto start.



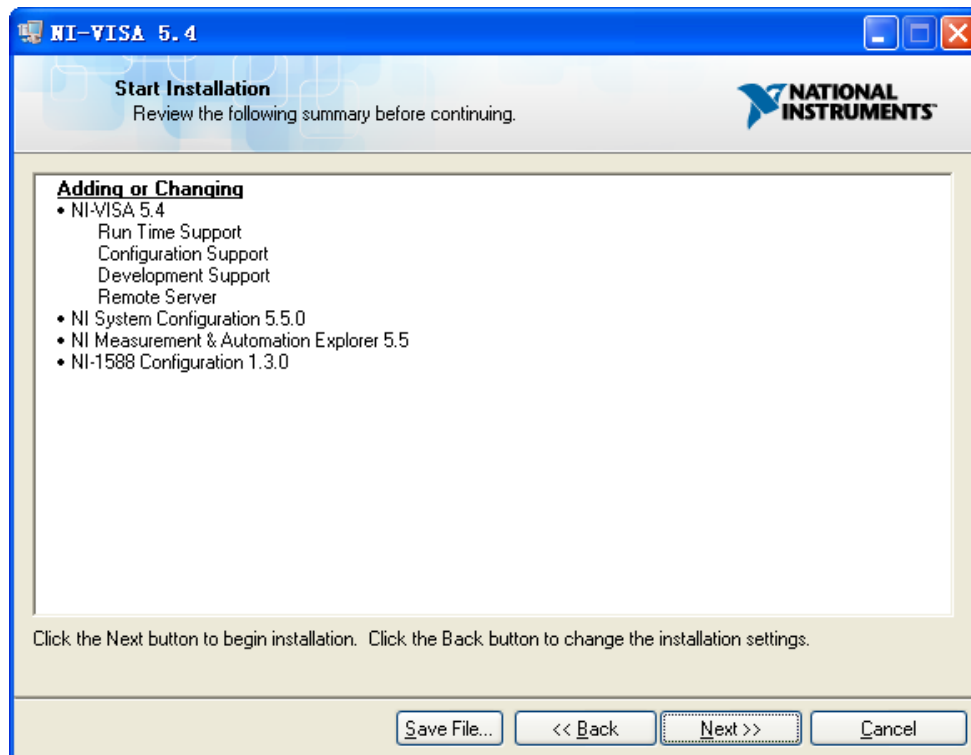
- c. The NI-VISA install dialog is shown above. Click Next to start the installation process.



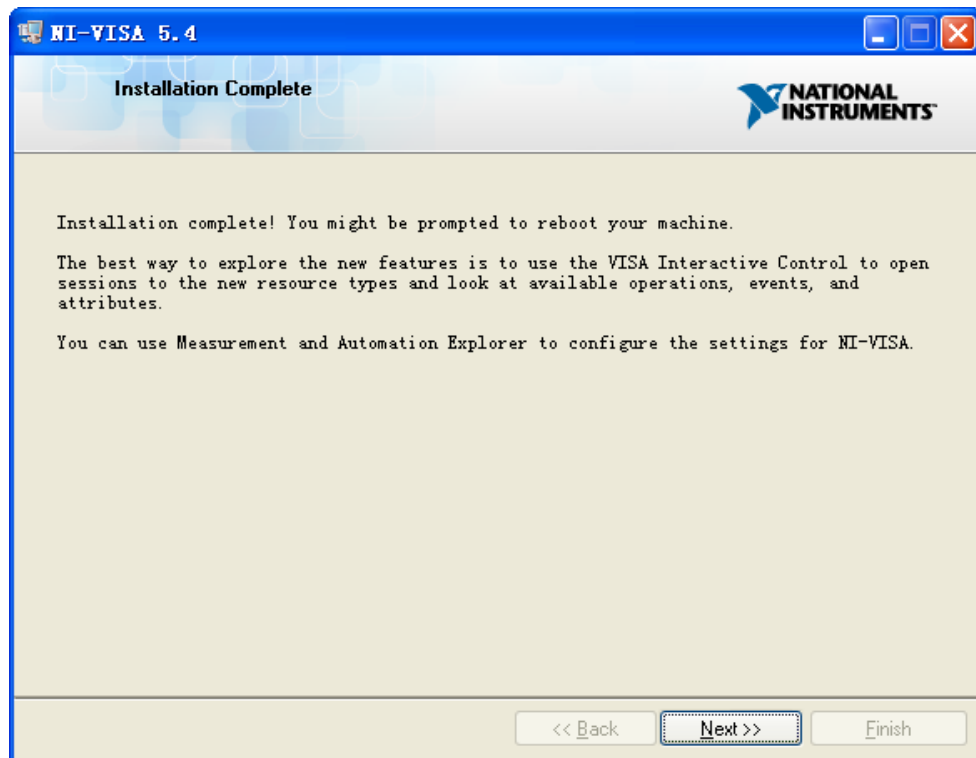
- d. Set the install path, default path is "C:\Program Files\National Instruments\"," you can change it. Click Next, dialog as shown above.



- e. Click Next twice, in the License Agreement dialog, select the “I accept the above 2 License Agreement(s).”, and click Next, dialog as shown below:



- f. Click Next to begin installation.

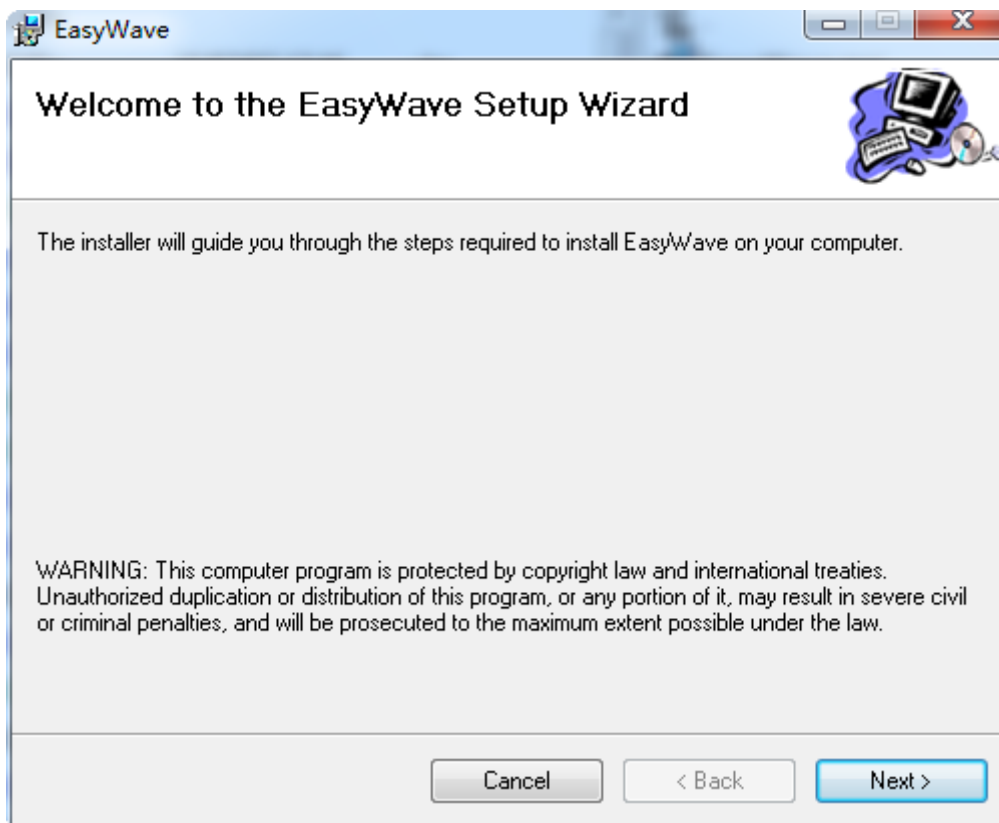


g. Now the installation is complete, reboot your PC.

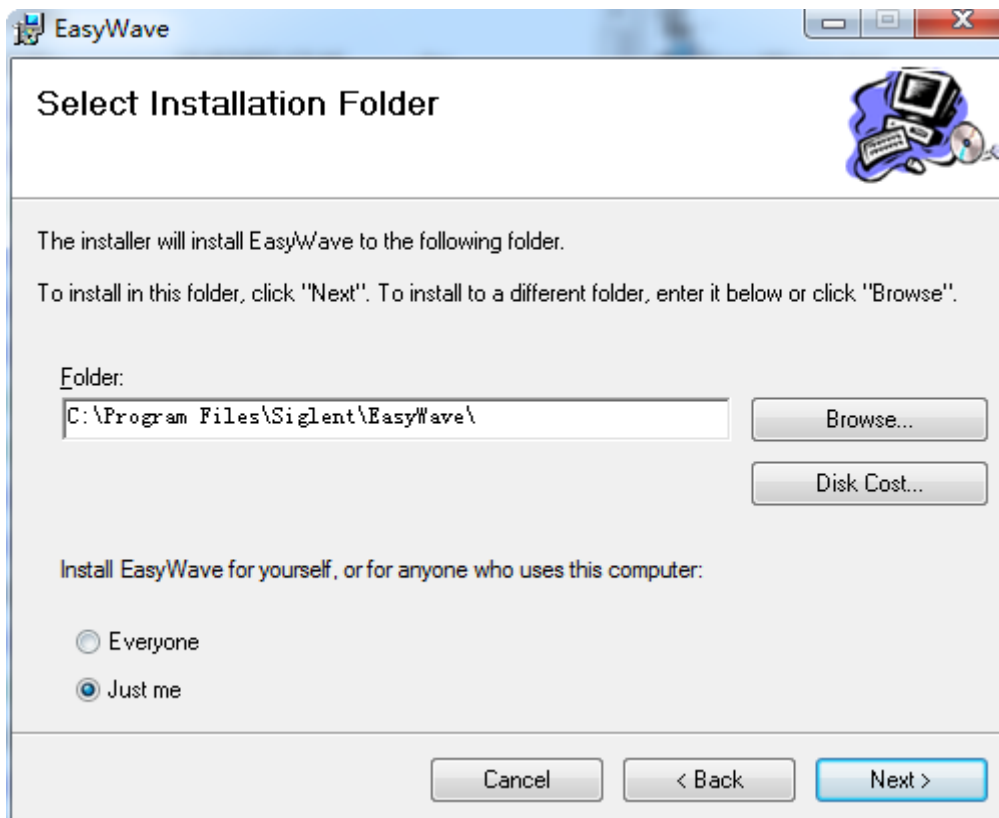
If you don't want to install the tools in NI-VISA, you can install only the NI-VISA runtime engine, which is much smaller than the full version. For example, download [NI-VISA Run-Time Engine 5.4](#) to your PC and install it as default selection. Its installation process is similar to the full version.

2 EasyWave Software Installation

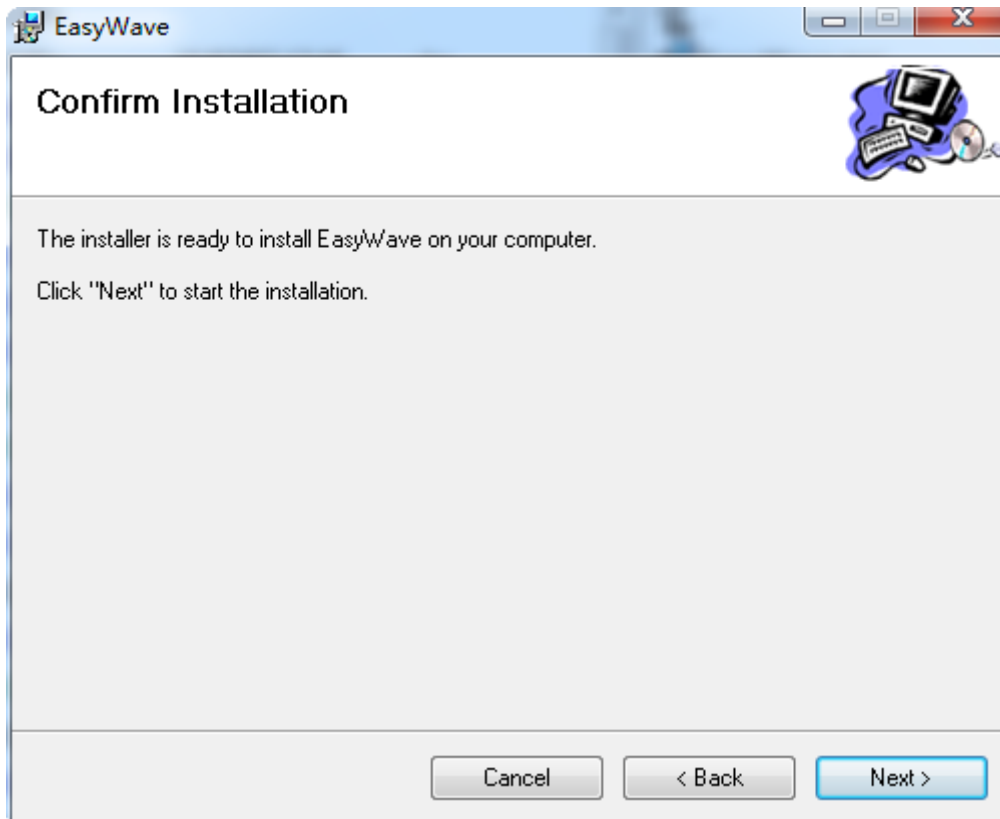
a. Double click on the EasyWave_setup.msi file, launch the install process, dialog as shown below:



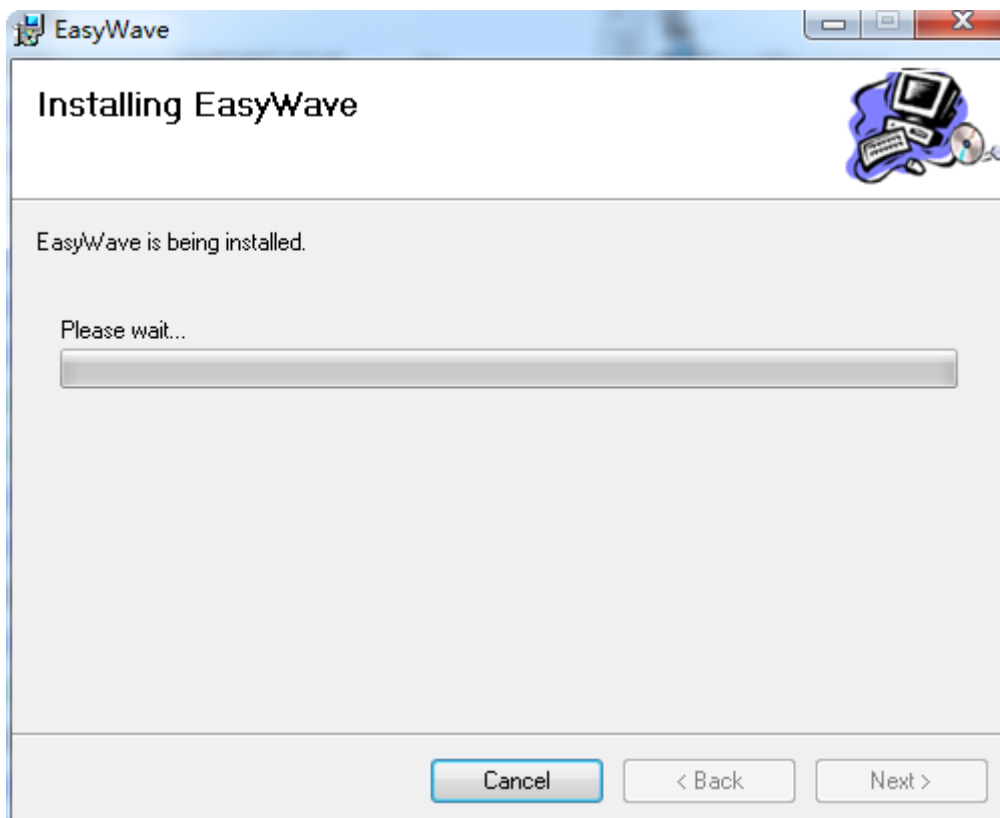
- b. Click Next, dialog as shown below:

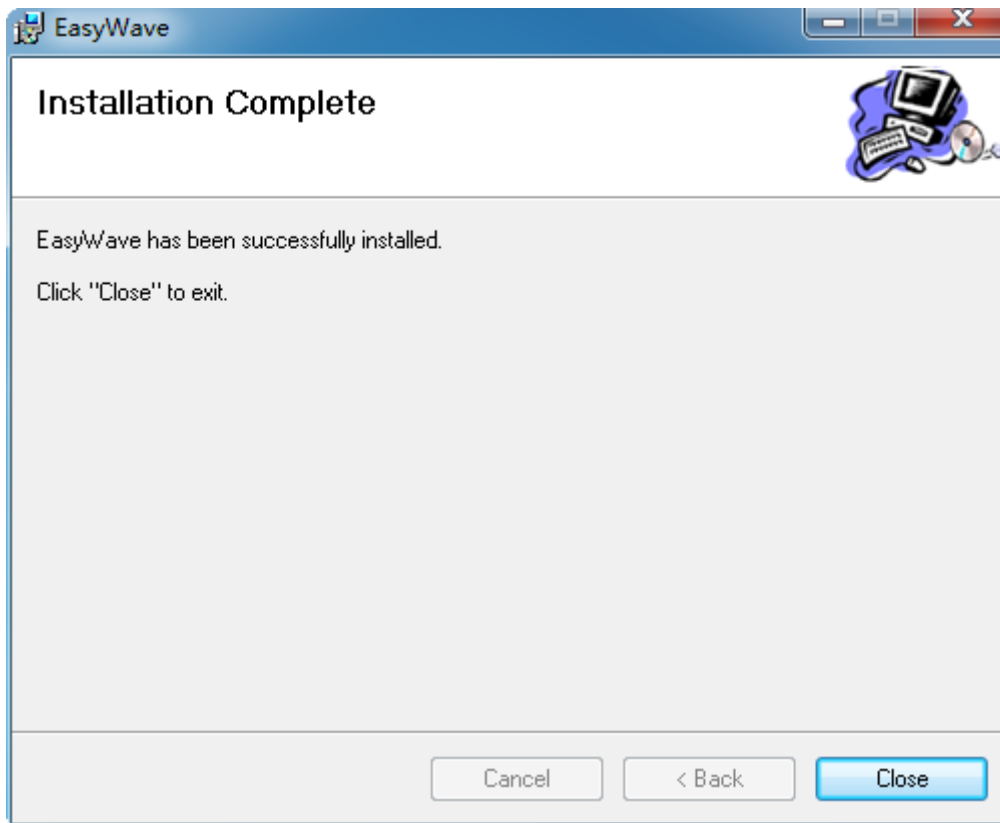


- c. Set the install path, default path is “C:\Program Files\Siglent\EasyWave\”, you can change it, click Next, dialog as shown below:



- d. Click Next to start the installation:



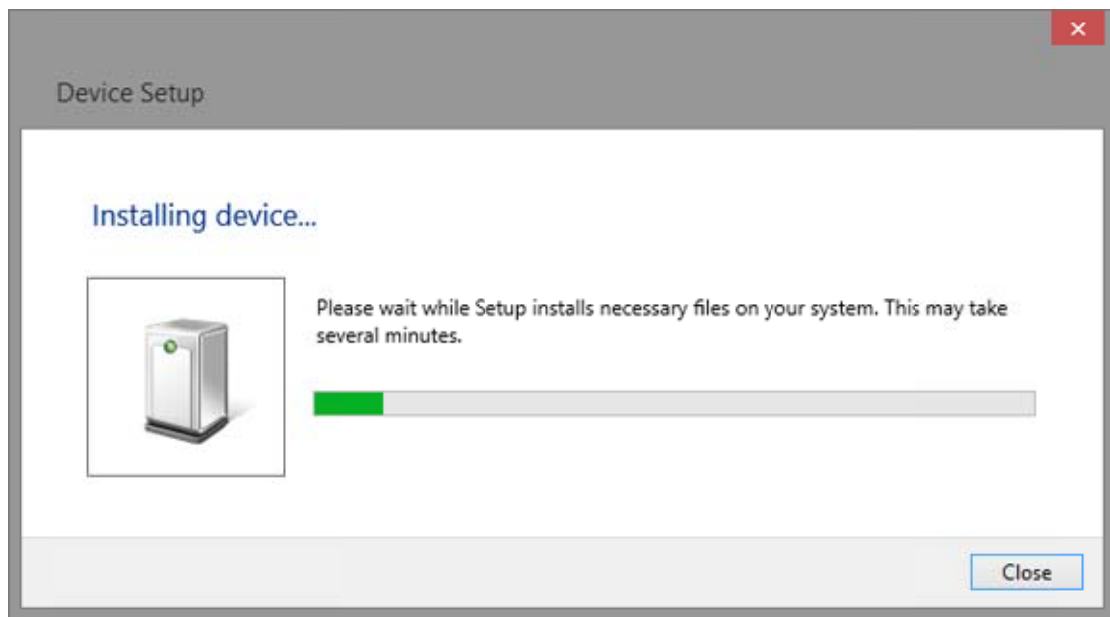


- e. Wait for the installation to complete and then Click “Close” to exit.

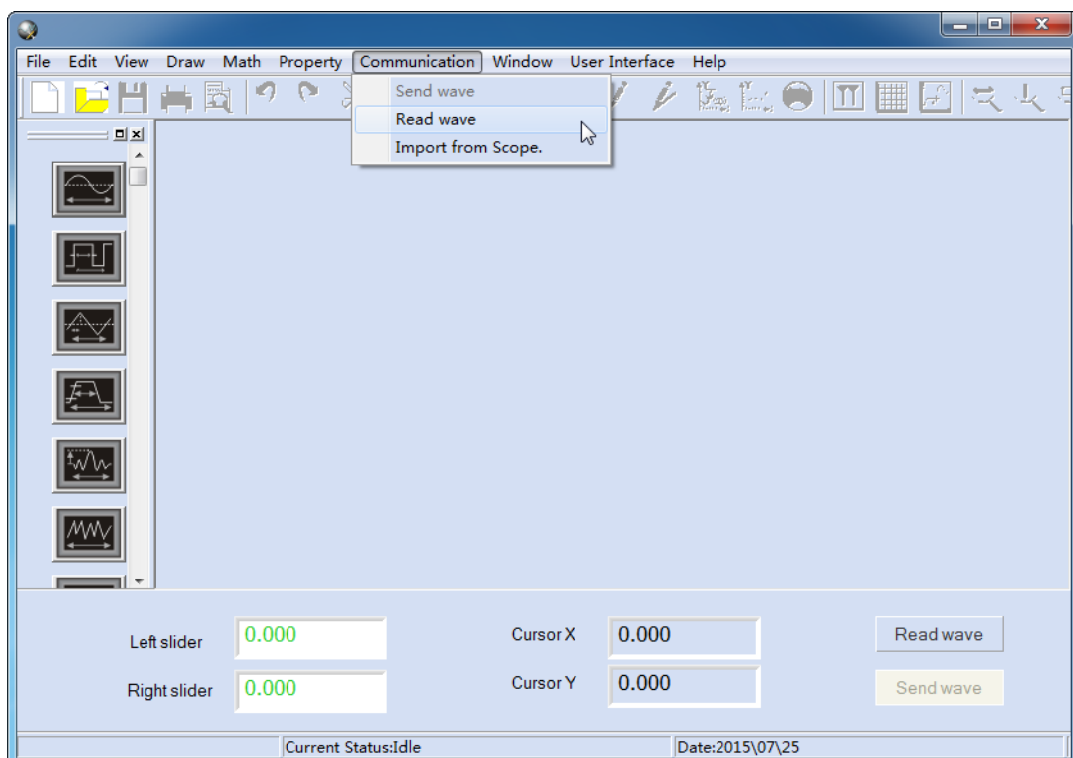
2.1 Connect the Instrument and PC

Depending on your specific model your arbitrary waveform/function generator may be able to communicate with a PC through the USB or LAN interface. This manual takes the USB as an example. (For instructions to communicate with a PC through the LAN interface see the User Manual.)

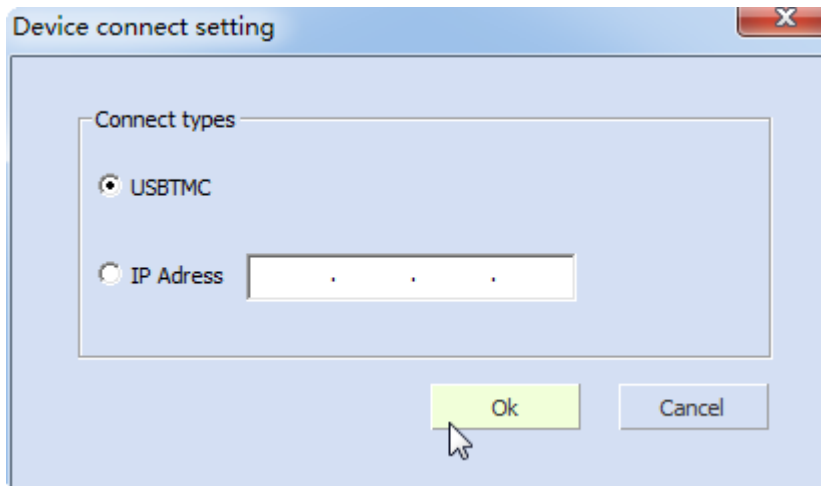
- a. Connect the USB Device interface at the rear panel of the arbitrary waveform/function generator and the USB Host interface of the PC using a USB cable. Assuming your PC is already turned on, turn on your arbitrary waveform/function generator and your PC will display the “Device Setup” screen as it automatically installs the device driver as shown below.



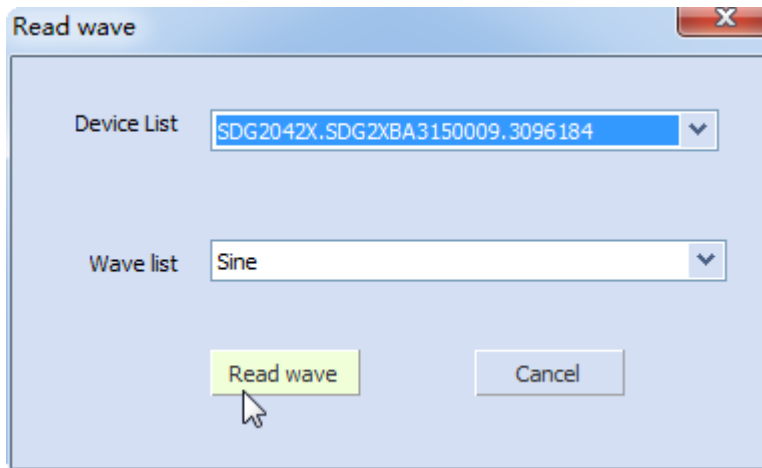
- b. Wait for the installation to complete and then proceed to the next step.
- c. Launch EasyWave, the application as shown below.



- d. Click Communication>>Read wave, the “Device connect setting” dialog is shown below:



e. Choose USBTMC, Click OK, the Read wave dialog is shown below:



f. Click Read wave and the software will display the device information, the result is shown below:

